

WILDLIFE INTERNSHIP & SERVICE LEARNING

VICTORIA FALLS ZIMBABWE



BUILD YOUR WILDLIFE CAREER SKILLS - MAKE A DIFFERENCE

Africa's breathtaking landscapes and majestic wildlife have long captivated travelers worldwide. However, the delicate balance of these ecosystems and the survival of their inhabitants face ongoing threats. We're dedicated to preserving Africa's natural resources and wildlife through wildlife research, conservation, caring for sanctuary animals, and habitat restoration.

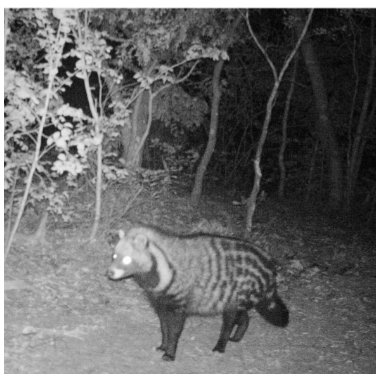
For those aspiring to pursue a career in wildlife, breaking into these fields can be difficult, but immensely rewarding.

Our Wildlife Internships & Service Learning opportunities provide a stepping stone into these careers. Our experienced staff, who have traversed similar paths, will guide and support you as you contribute your skills and gain a competitive edge in your chosen field.

Engage in diverse tasks, such as monitoring, rehabilitating and managing our 4000-acre reserve, participating in wildlife research and monitoring, maintenance projects, and caring for captive animals at the sanctuary. There are ample opportunities for interns to follow your interests, or even pursue research aligned with your university thesis, thus contributing to the ongoing research and work.

Our internship program encompasses a diverse range of projects, allowing you to gain exposure to multiple areas of conservation work. Moreover, you will have the flexibility to focus your efforts on projects that align with your specific skills and interests. Including, tailored options for thesis projects at an additional cost (see "Build Your Own Programme" section).

Join our team and our commitment to environmental preservation and the safeguarding of Africa's natural heritage. Together, let us create a lasting impact.



EXAMPLES OF OUR ONGOING WORK & PROJECTS

Camera Trap Survey

Camera traps help capture rare species in our forest, revealing intricate spot- and stripe patterns and whisker details that are otherwise difficult to observe. This information enhances our understanding of individuals and confirms population status, while teaching valuable skills in camera trap management, species identification, and data analysis.

Elephant Impact Monitoring

Excessive elephant populations in upper Zambezi have effects on other species and vegetation, compounded by the growing human population. Monitoring involves tracking elephant movements, assessing vegetation through photo points, quadrants, and transects. Skills gained include conducting transects, and collecting and analyzing data using various methods.

Captive Wildlife Enrichment Study

Comparing wild and captive populations' reactions to stimuli aids wildlife population studies. The intention of this project is to utilise the opportunity created by having captive animals for research purposes that can be used in wildlife population studies. This project develops skills in research techniques, initiative, and data analysis.

Mammal Transects

Ongoing monitoring in Zambezi National Park and its surroundings studying population dynamics, distribution, and health, while addressing the impact of human population growth on wildlife and ecosystems. This initiative offers opportunities to acquire skills in conducting transects, research techniques, body score chart assessment, data analysis, species and sex identification, as well as basic QGIS and comparative data analysis.



BUILD YOUR OWN PROGRAMME

In addition to our existing internship programs, which offer valuable work experience, university placements, and data collection opportunities for ongoing projects, **we also provide the option to collaborate with us on creating a tailored program specifically for conducting in-depth research for your university thesis or dissertation.** This customized research opportunity allows you to explore a tailored research topic that aligns with your needs and interests.

Please note that creating a program for your thesis/dissertation usually incurs an additional cost. This is because we provide extra support in the form of guides or vehicles to facilitate your research. We strive to ensure that you have the necessary resources to carry out your research effectively and successfully.



YOUR INTERNSHIP WEEK

*This is a broad example of how your week as an intern could look. However, due to the nature of the project these activities may change on a daily basis and will look different week to week depending on what is needed to be done!

	MONDAY	TUESDAY	WEDNESDAY	THURSDAY	FRIDAY
AM 1	Care and upkeep of our sanctuary animals	Elephant Impact Monitoring Project	Mammal transect in Zambezi National Park	Bird Survey	Game Drive in Zambezi National Park
AM 2	Individual Project Work	Individual Project Work		Research Data Entry	
PM	Wildlife Enrichment Project	Wildlife Conservation or Research Session		Wildlife Monitoring Work	
EVENING	Evening around the campfire	Evening Off!	Movie/Game Night or just hanging out with the group!	Evening Off!	Go for dinner at Victoria Falls renowned restaurants (additional cost)

	SATURDAY	SUNDAY
AM	Optional Individual Project Work	DAY OFF! Victoria Falls is the adventure capital of Africa - take advantage by doing a bungee, horse ride, gorge swing, and more!
PM	TIME OFF! Venture out on a sunset cruise or helicopter flight over the Falls	

YOUR ACCOMMODATION

Our volunteer village is nestled at Victoria Falls Wild Hub in Fuller Forest – 4000 acres of prime forest estate, surrounded by beautiful flora and fauna. Staying in our basic safari tents of 4-6 people with a large shared ablution block. There is the opportunity to upgrade to an en-suite tent or en-suite cottages, at an additional cost, when there is availability. Down time is spent in the reception area overlooking a watering hole where you might spot some wildlife like elephants, kudu or impalas!

It's only a 20-minute drive from the Victoria Falls town and a 10-minute drive from the Victoria Falls international airport so you can take a taxi in to town at any point!

There's no other place on Earth like Victoria Falls! Known as the Adventure Capital of Africa and one of the Seven Natural Wonders of the World, the variety of activities to enjoy in this area are truly unlimited. Make yourself at home at the world's largest waterfall system. This is a dream location for any traveller looking to connect with nature in the most unforgettable way.

Wildlife is held in the highest regard in Victoria Falls. With the town bordering an unfenced National Park, it is not uncommon to have wildlife in the streets. Elephants, lions and buffalo are all known to move through the town whilst warthogs and baboons are daily visitors. Surrounded by incredible wildlife, spectacular birds and awesome reptiles, the safari never stops. Your next wildlife encounter can happen at any given moment!



ABOUT US



As a key buffer area between National Parks and local communities, Victoria Falls Wild Hub (VFWH) exists to facilitate efficient conservation efforts for the land, wildlife, and people in and around Fuller Forest.

We believe in the transformative power of learning, serving, and stewarding the natural world toward a better future.

In 2023, the Victoria Falls Wild Hub was established to take over the responsibility of leasing and managing the 4,000-acre Fuller Forest as a for-profit, purpose-driven venture.

THE SANCTUARY

VFWH inherited over 20 lions which were a legacy of an unsuccessful breeding-for-release program by another organisation. We have the responsibility to maintain the highest standard of care for these lions. The fees paid by visitors who view the lions help to fulfil this obligation and partially fund the broader stewardship of the forest.

Apart from the lions, VFWH cares for many animals that have been rescued for rehabilitation purposes as well as animals caught in human-wildlife conflict, including hyenas, ostriches, a duiker, a baboon, a monkey, and a crowned eagle to name a few. We have different animals at the sanctuary depending on which animals are in need so you as a visitor may meet both new and old residents! VFWH will only accept to take in and care for animals that are in genuine need of rescue, rehabilitation, and where possible, released back into the wild.

WHAT WE DO

VFWH offers different experiences from day visits, volunteer/intern/service learning placements, and faculty-led group travel. Through collective efforts, from daily visitors, volunteers, interns, and university partners, we create a meaningful impact on wildlife, the environment, and the Fuller Forest Conservation Area. Our impact success is dependent on the success of our activities. The more guests and partners that come through our doors, the greater the impact we have on the area!

YOUR PROJECT

PRICING (MINIMUM STAY 4 WEEKS)

2025	4 WEEKS	6 WEEKS	8 WEEKS	10 WEEKS	12 WEEKS	CUSTOM
USD	3595	4595	5595	6595	7595	Email us

It is also possible to pay in Pounds & Euros on request

*Please note that if you stay longer than 4 weeks you will require to obtain a "Temporary Employment Permit" at an additional cost of US\$500.

ARRIVAL DAYS

Arrival days are on Mondays at Victoria Falls International Airport.



WHAT'S INCLUDED

- Accommodation in shared safari tents
- 3 basic meals a day, 7 days a week
- All project fees & national park entry fees
- 1 trip to Victoria Falls during your wildlife Internship stay
- Airport pick-up/drop-off to and from Victoria Falls International Airport
- Housekeeping and weekly laundry services
- Free WiFi (weather or power cuts can cause the WiFi to be slow at times)
- 24-hour, on-site support by our friendly and knowledgeable staff



WHAT ELSE CAN YOU DO?

Victoria Falls is the adventure capital of Africa! Here are just a few of the experiences you can take advantage of at an additional cost while staying with us:

- A boat cruise on the mighty Zambezi River
- Follow in the footsteps of David Livingstone with a tour around the Victoria Falls National Park
- Adrenaline junkie? Bungee, swing or slide off the famous bridge or gorge
- Get another stamp in that passport of yours by going on a game drive and boat cruise in the Chobe National Park (Botswana)
- Hang over the Victoria Falls as you swim in the Devil's Pool (seasonal approx. August-Feb)
- Get your adventure fix by white water rafting down the lower Zambezi River
- Fly above the Falls with a helicopter ride – getting a bird's eye view of one of the world's seven wonders!
- Taste traditional Zimbabwean dishes while you enjoy drumming, dancing and singing at The Boma Restaurant.

